

RTSTAND GATEWAY - AUTOMATED TESTING FOR AUTOMOTIVE GATEWAYS

Overall, ECUs are critical to the functionality of a vehicle and all of the bus traffic. It is important to test them in a variety of ways, according to industry requirements, so that all sporadic and short errors can be detected in a reliable way. Using RTStand Gateway, the overall process of testing and error reporting is being significantly simplified and accelerated.

FLEXIBLE TESTER DEFINITION

- Scalable systems between 1 DUT and 6 DUT in parallel
- Support of up to 42 CAN, 18 LIN, 18 FlexRay ports and their configuration files (*.dbc, *.ncl, *.ldf, FIBEX)
- Support of DMM, AIO, DIO etc
- Support of onboard supply system simulation
- Support of Diagnose over IP and over CAN
- Support of WakeUp and Sleep tests
- Support of various climate chambers
- Support of all other native RTStand features



Gateway tester for 1 DUT used for functional tests, LV 124 tests and EMC tests



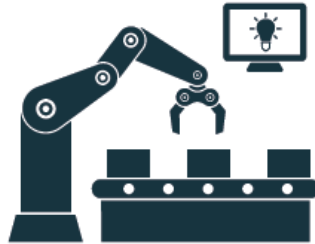
Gateway tester for 6 DUTs used for PV, DV and lifetime tests

Based on over 20 years of being National Instruments Alliance Partner (Silver) and relying on a double LabVIEW/TestStand Architect certification, we at WKS Informatik focus on customer success, providing innovative and cost-efficient solutions for industries such as Automotive, Aerospace and RF/Communications, complying with the most challenging software and hardware requirements.

**LV 124 / LV 148
AUTOMOTIVE TESTING**



**INDUSTRIAL
AUTOMATION**



**RF / RADAR
AUTOMOTIVE TESTING**



WKS Informatik GmbH

Call us: + 49 751 36 660 60

Fax us: + 49 751 36 660 66

Mail us: contact@wks-informatik.de

Visit us: WKS Informatik GmbH | Ulmer Strasse 8 | 88212 Ravensburg | Germany

Our social channels:

<https://www.linkedin.com/company/wks-informatik-gmbh>

<https://www.youtube.com/user/WKSinformatikTV>

