	Tube Analyzer	Dok Nr. QS-ID-036
	Installation Guide	Stand Sept 2010
		Revision 001

Tube Analyzer

Install Guide

Stand: 07.10.2015

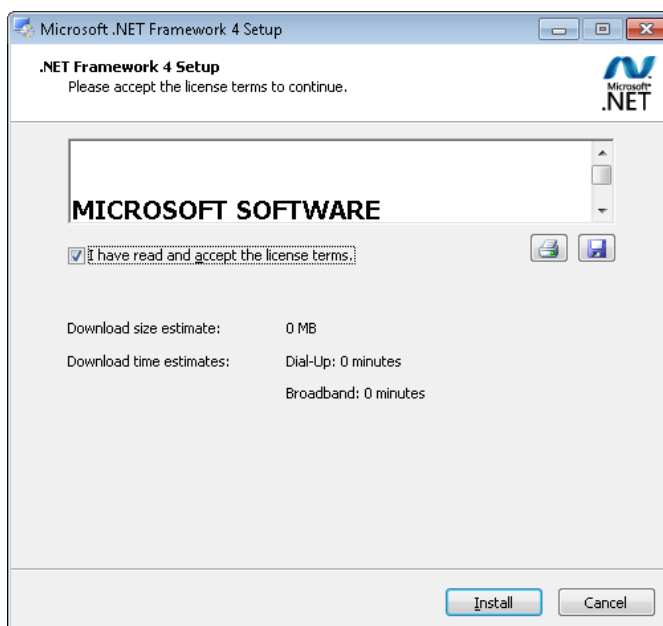
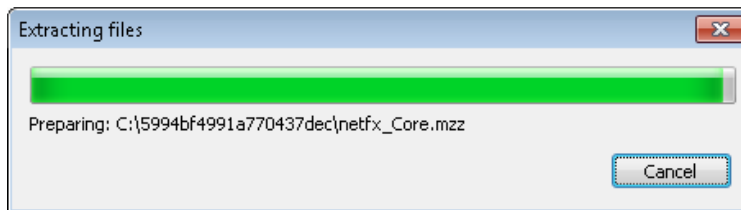
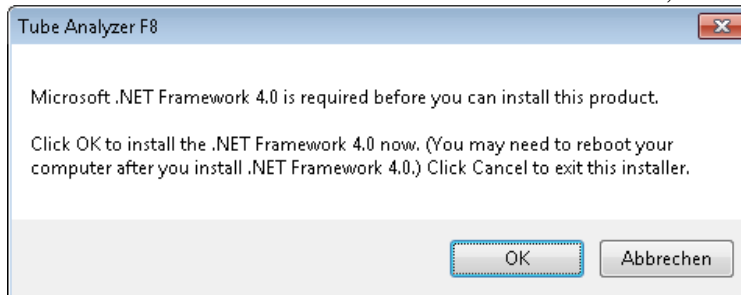
Content

1	INSTALLATION.....	3
2	CONTACT AND TECHNICAL SUPPORT	9

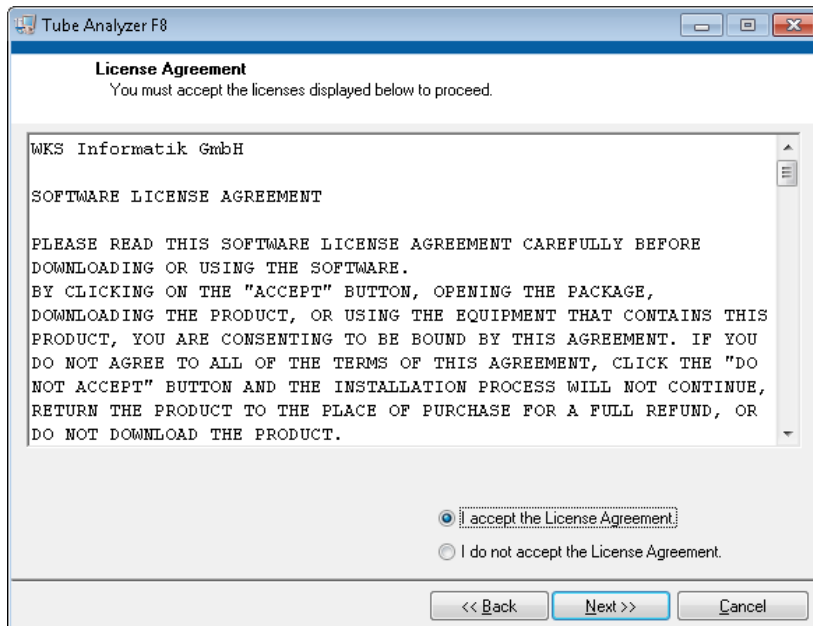
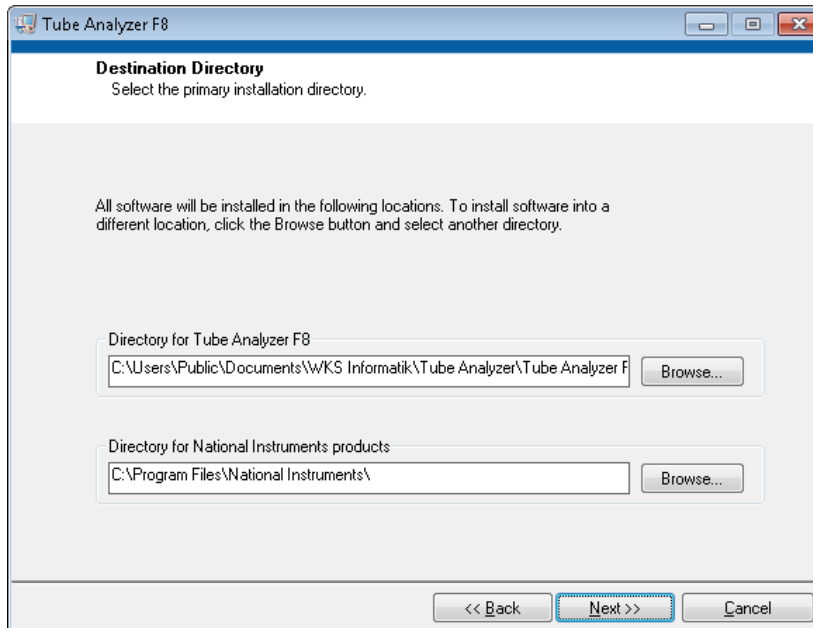
1 Installation

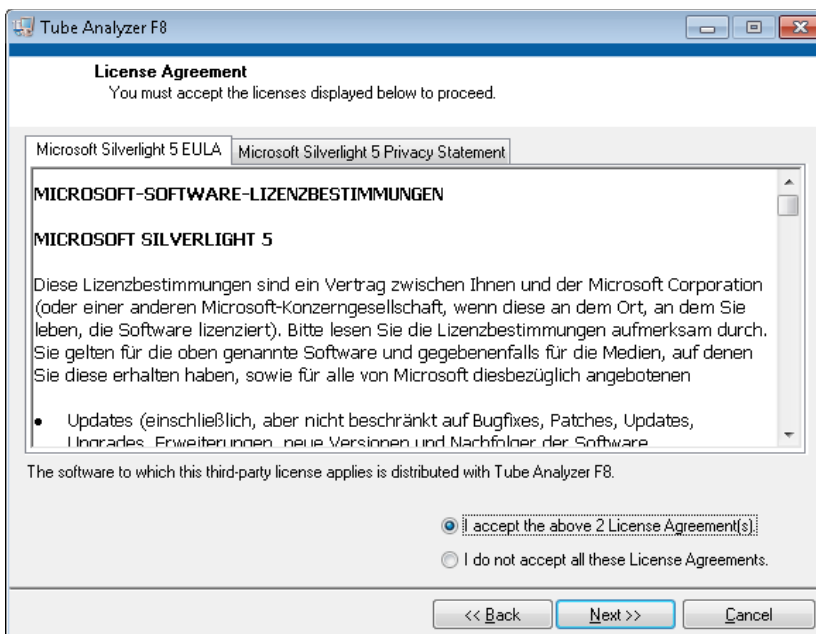
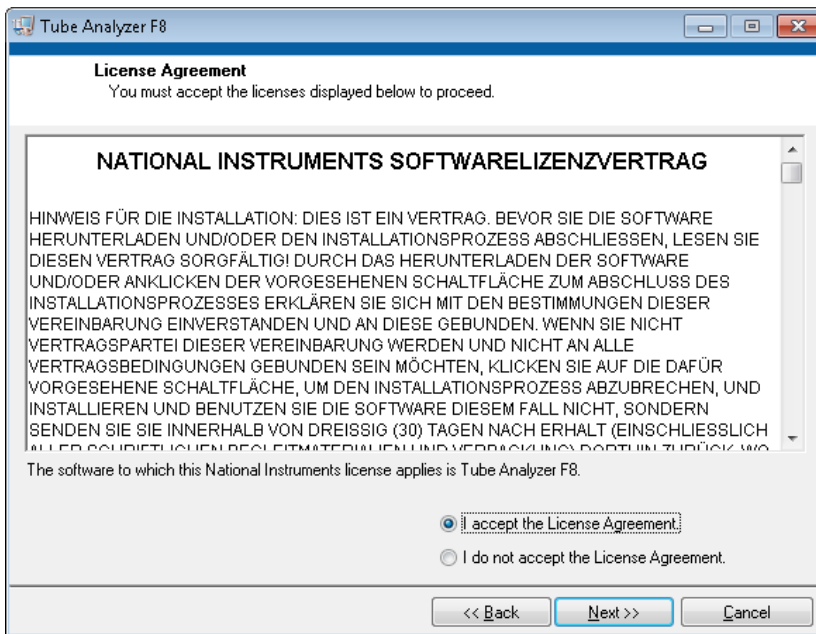
Upon starting the installer, the following steps need to be followed in order to install the Tube Analyzer:

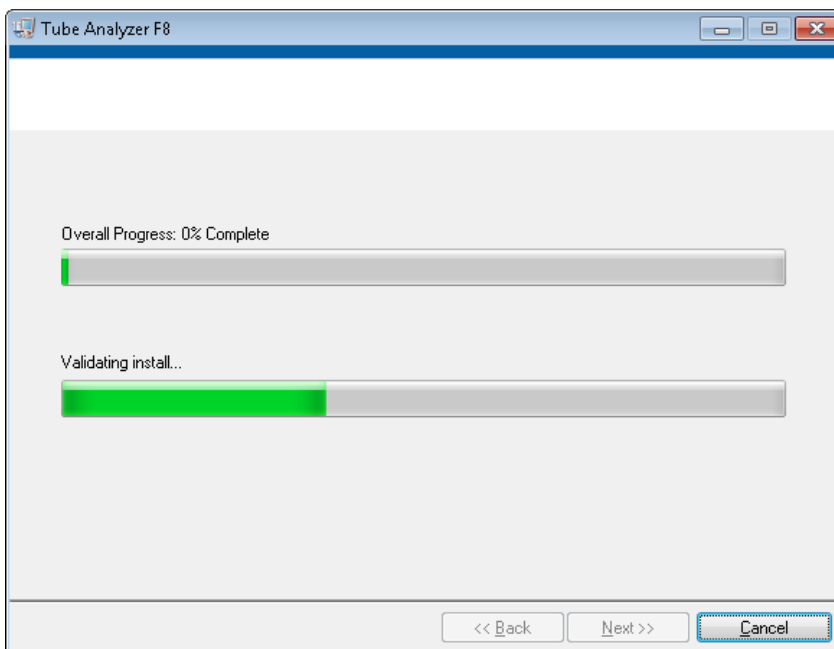
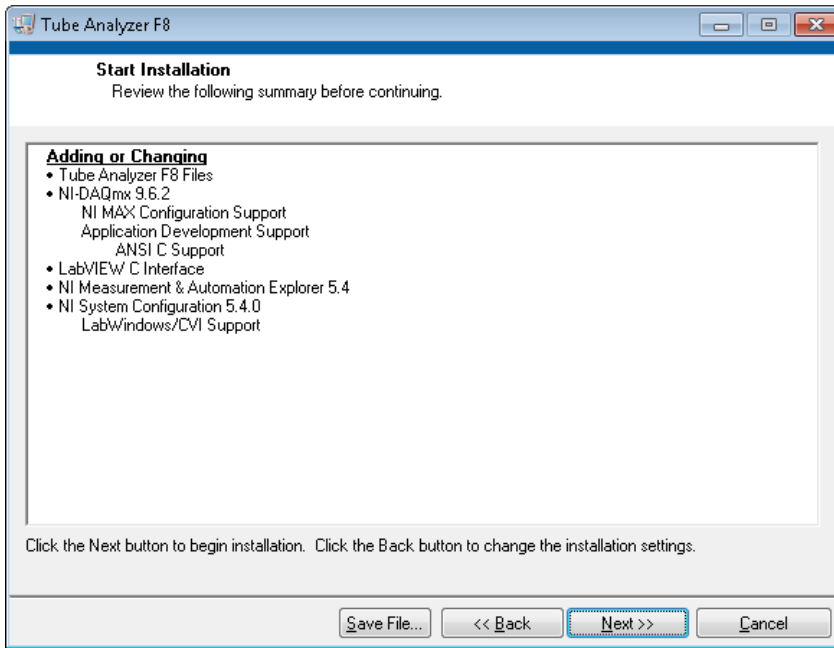
If the PC doesn't have a .NET Framework installed, the installer will install this.

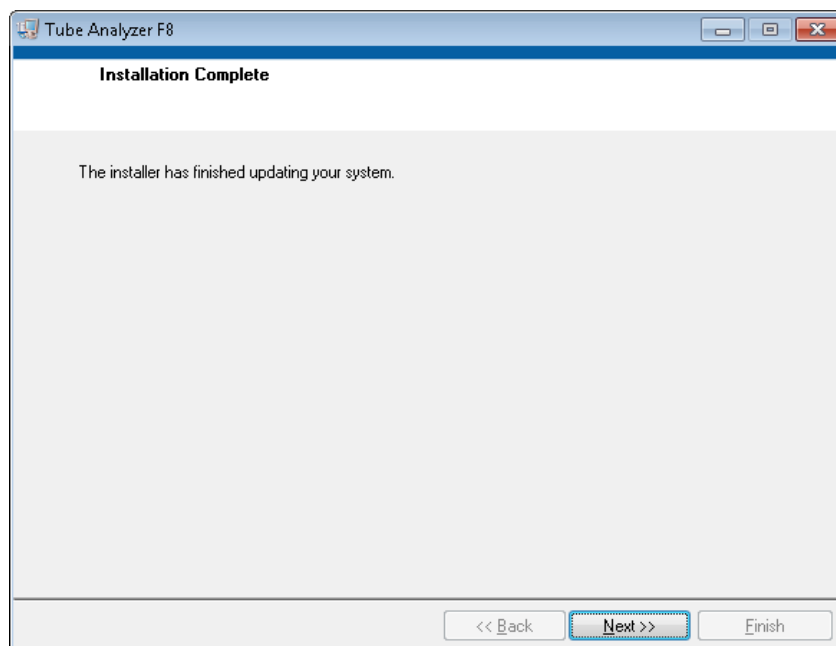


Otherwise, the installation will start normally.

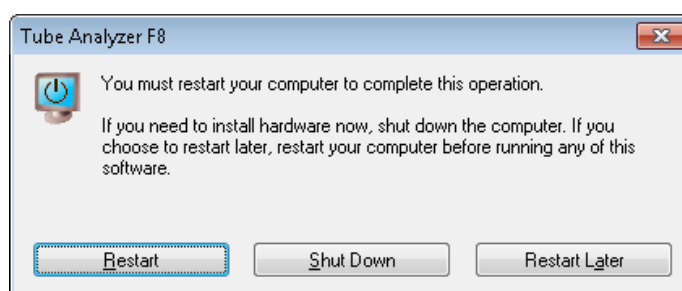




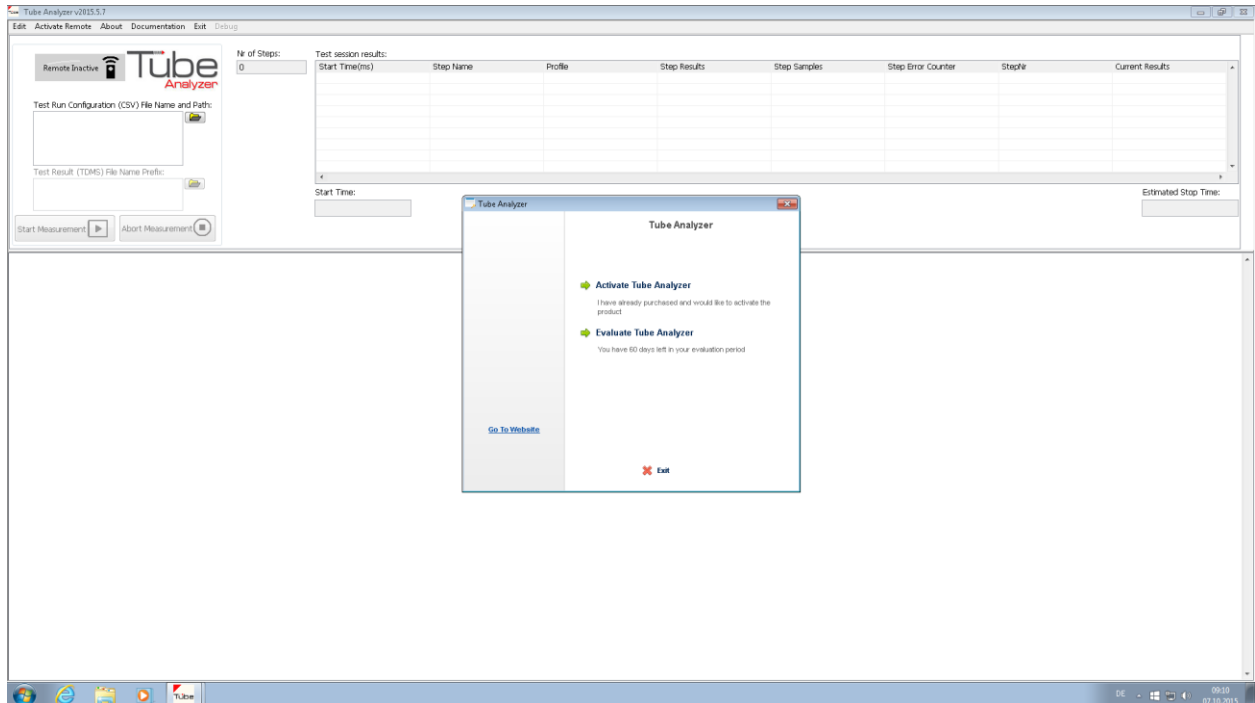




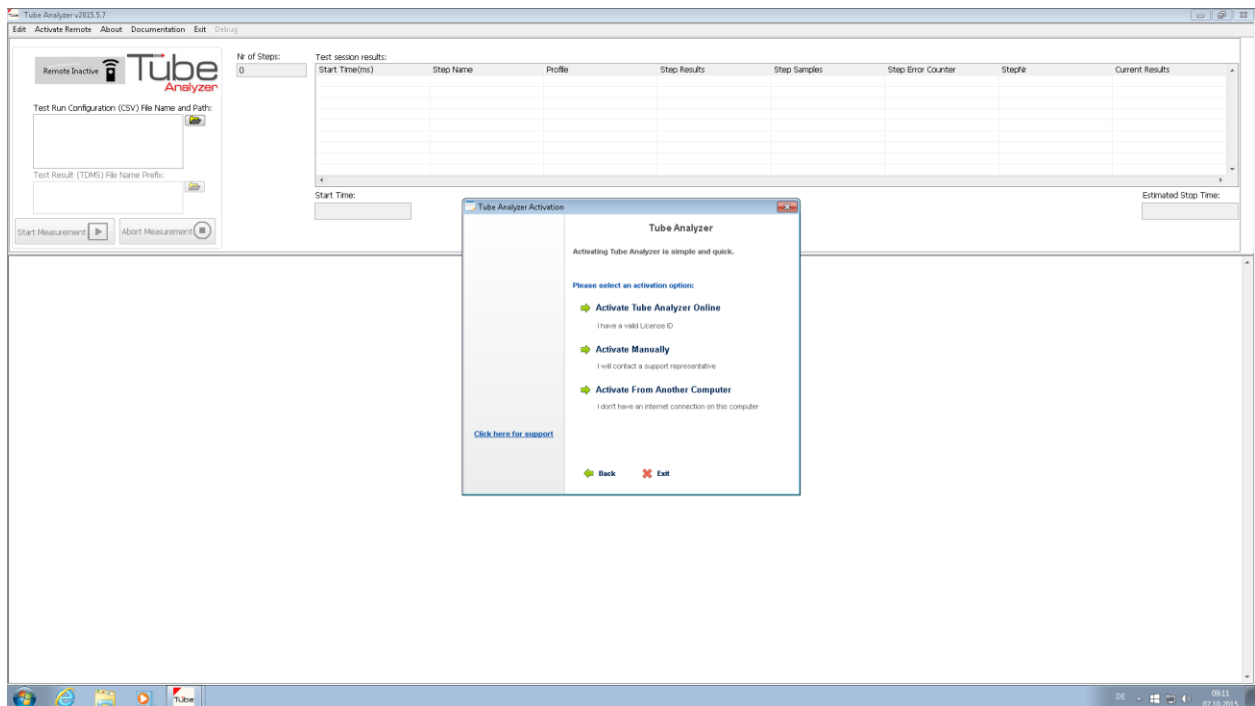
Upon completion, the user will be instructed to restart the PC. Please restart!



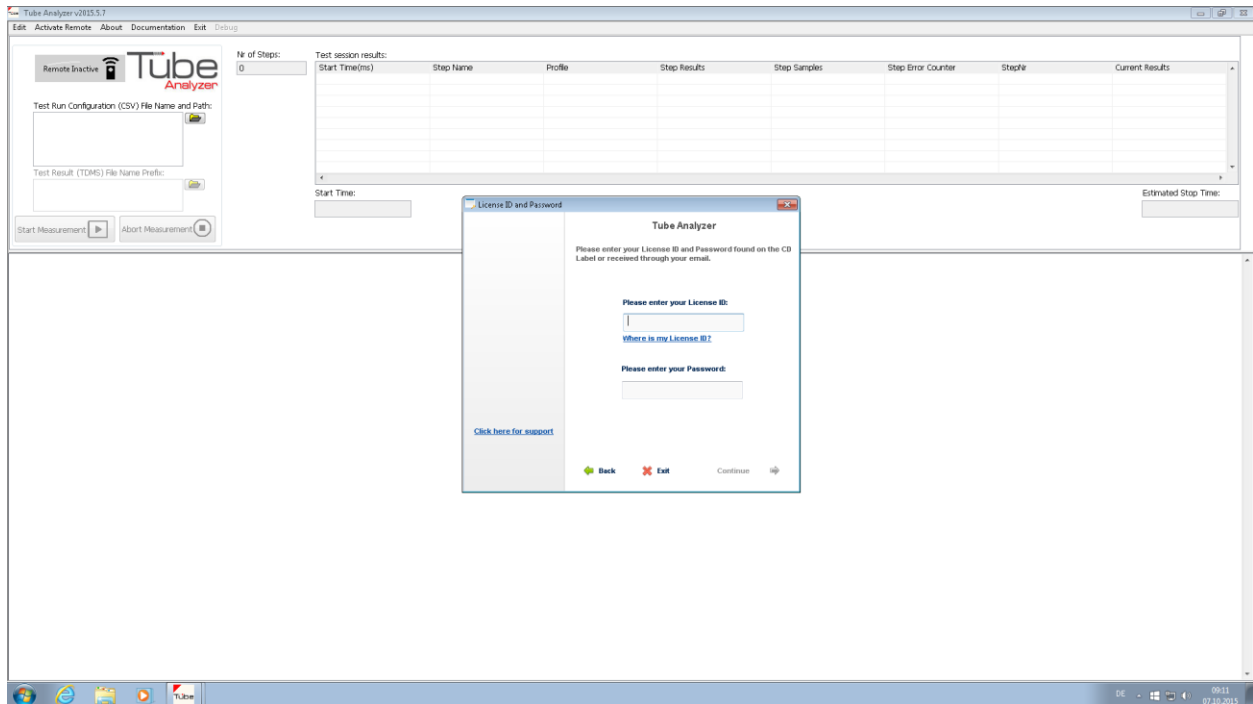
After the restart, the Tube Analyzer can be started (first time with Administrator privileges) and the user can choose between the Evaluation Mode that runs for 60 days or the immediate activation.



The activation can be done online (with an Internet connection), manually, if the user has the activation information, or from another computer:



In all three cases, the user has to input a License ID and a Password. Upon a correct activation, the user can then use the Tube Analyzer according to the License Agreement.



2 Contact and Technical Support

For contacting WKS Informatik GmbH, please use following channels:

Address:

Ulmerstrasse 8
88212 Ravensburg
Germany

Telephone: 0049 751 36 660 60

Fax: 0049 751 36 660 66

Email: info@wks-informatik.de