	<b>Tube Analyzer LogViewer</b>	Dok Nr. QS-ID-042
	<b>User Guide</b>	Stand Dez 2014
		Revision 002


# Tube Analyzer LogViewer 2.3

## User Manual

Stand: 25.9.2015

<b>WKS Informatik GmbH</b> Ulmer Straße 8 88212 Ravensburg Tel: ++49 (0)751 / 366 60 – 60 www.wks-informatik.de	Ust-IdNr. DE 203907888 HRB 552079	<b>Geschäftsführer</b> Ronald Kaempf	<b>Bankverbindung</b> IBAN DE91 6505 0110 0048 0755 23 SWIFT-BIC: SOLADES1RVB Kreissparkasse Ravensburg
--	--------------------------------------	---	--

<b>Erstellung:</b> Datum: 20.11.2014 Andreea Solomon	<b>Prüfung:</b> Datum: 20.11.2014 Gisela Lämmle-Steinert	<b>Freigabe:</b> Datum: 20.11.2014 Gisela Lämmle-Steinert	Seite 1 von 11
--	--	---	----------------

	<b>Tube Analyzer LogViewer</b>	Dok Nr. QS-ID-042
	<b>User Guide</b>	Stand Dez 2014
		Revision 002

	Name	Company	Date
Designed by	Andreea Solomon	WKS	28.02.2013
1 <sup>st</sup> Checker			
2 <sup>nd</sup> Checker			

### Version history

Version	Author	Changes	Date
1.0	Andreea Solomon	Created	19.06.2015


**WKS Informatik GmbH**  
 Ulmer Straße 8 88212 Ravensburg  
 Tel: ++49 (0)751 / 366 60 – 60  
[www.wks-informatik.de](http://www.wks-informatik.de)

Ust-IdNr. DE 203907888  
 HRB 552079

**Geschäftsführer**  
 Ronald Kaempf

**Bankverbindung**  
 IBAN DE91 6505 0110 0048 0755 23  
 SWIFT-BIC: SOLADES1RVB  
 Kreissparkasse Ravensburg

<b>Erstellung:</b> Datum: 20.11.2014 Andreea Solomon	<b>Prüfung:</b> Datum: 20.11.2014 Gisela Lämmle-Steinert	<b>Freigabe:</b> Datum: 20.11.2014 Gisela Lämmle-Steinert	Seite 2 von 11
--	--	---	----------------


	<b>Tube Analyzer LogViewer</b>	Dok Nr. QS-ID-042
	<b>User Guide</b>	Stand Dez 2014
		Revision 002

## Content

1	General.....	4
2	User Interface .....	4
2.1	Menu .....	5
2.1.1	Load Data .....	5
2.1.2	Settings .....	5
2.1.3	Data Reduction Mode.....	5
2.1.4	About.....	6
2.1.5	Exit .....	6
2.2	Channel and Tube lists.....	6
2.3	Loaded file .....	6
2.4	Graph display .....	6
2.5	Various controls .....	7
3	Functionality.....	7
4	Updates .....	11
5	Technical Support and Contact.....	11

<b>WKS Informatik GmbH</b> Ulmer Straße 8 88212 Ravensburg Tel: ++49 (0)751 / 366 60 – 60 www.wks-informatik.de	Ust-IdNr. DE 203907888 HRB 552079	<b>Geschäftsführer</b> Ronald Kaempf	<b>Bankverbindung</b> IBAN DE91 6505 0110 0048 0755 23 SWIFT-BIC: SOLADES1RVB Kreissparkasse Ravensburg
--	--------------------------------------	---	--

<b>Erstellung:</b> Datum: 20.11.2014 Andreea Solomon	<b>Prüfung:</b> Datum: 20.11.2014 Gisela Lämmle-Steinert	<b>Freigabe:</b> Datum: 20.11.2014 Gisela Lämmle-Steinert	Seite 3 von 11
--	--	---	----------------

	<b>Tube Analyzer LogViewer</b>	Dok Nr. QS-ID-042
	<b>User Guide</b>	Stand Dez 2014
		Revision 002

## 1 General

The Tube Analyzer Log Viewer was created as part of the Tube Analyzer Pro Package, together with the TestRun Generator and the Tube Analyzer Measurement Software.

The Log Viewer is a tool used to visualize and analyze the TDMS files generated by the Tube Analyzer.

## 2 User Interface

The interface of the LogViewer is composed of several areas:

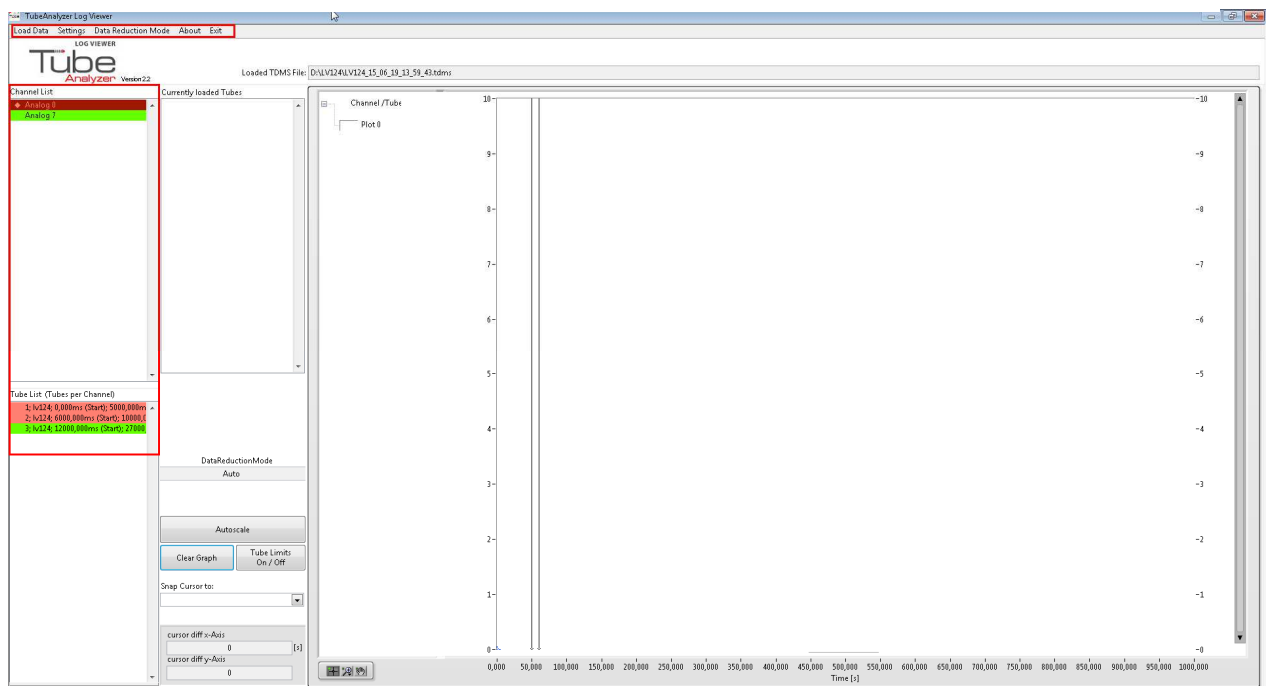



Fig.1 Tube Analyzer LogViewer – User Interface

<b>WKS Informatik GmbH</b>	Ust-IdNr. DE 203907888	<b>Geschäftsführer</b>	<b>Bankverbindung</b>
Ulmer Straße 8 88212 Ravensburg	HRB 552079	Ronald Kaempf	IBAN DE91 6505 0110 0048 0755 23
Tel: ++49 (0)751 / 366 60 – 60			SWIFT-BIC: SOLADES1RVB
www.wks-informatik.de			Kreissparkasse Ravensburg

<b>Erstellung:</b>	<b>Prüfung:</b>	<b>Freigabe:</b>	
Datum: 20.11.2014	Datum: 20.11.2014	Datum: 20.11.2014	
Andreea Solomon	Gisela Lämmle-Steinert	Gisela Lämmle-Steinert	Seite 4 von 11

	<b>Tube Analyzer LogViewer</b>	Dok Nr. QS-ID-042
	<b>User Guide</b>	Stand Dez 2014
		Revision 002

## 2.1 Menu

The runtime menu has following functions:

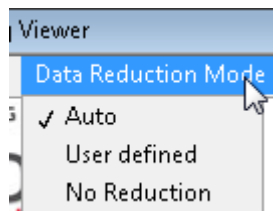
### 2.1.1 Load Data

The user can select a TDMS file to be displayed.

### 2.1.2 Settings

Several settings, such as plot colours and data reduction factor can be set using this option.

### 2.1.3 Data Reduction Mode



*Fig.2 Tube Analyzer LogViewer – Data reduction mode*


The user can set which kind of data reduction will be performed for the current data set.

The Auto mode reduces the data using an automated algorithm. The User defined mode uses the data reduction factor set in the Settings window in order to reduce the data displayed. The No reduction mode displays the data unreduced.

**Note: If there is no reduction performed, memory errors may occur and data display and analysis can be very slow!**

<b>WKS Informatik GmbH</b> Ulmer Straße 8 88212 Ravensburg Tel: ++49 (0)751 / 366 60 – 60 www.wks-informatik.de	Ust-IdNr. DE 203907888 HRB 552079	<b>Geschäftsführer</b> Ronald Kaempf	<b>Bankverbindung</b> IBAN DE91 6505 0110 0048 0755 23 SWIFT-BIC: SOLADES1RVB Kreissparkasse Ravensburg
--	--------------------------------------	---	--

<b>Erstellung:</b> Datum: 20.11.2014 Andreea Solomon	<b>Prüfung:</b> Datum: 20.11.2014 Gisela Lämmle-Steinert	<b>Freigabe:</b> Datum: 20.11.2014 Gisela Lämmle-Steinert	Seite 5 von 11
--	--	---	----------------

	<b>Tube Analyzer LogViewer</b>	Dok Nr. QS-ID-042
	<b>User Guide</b>	Stand Dez 2014
		Revision 002

## 2.1.4 About

The About window displays contact information for WKS Informatik GmbH.



Fig.3 Tube Analyzer LogViewer – About

## 2.1.5 Exit

The user can exit the application using this option.

## 2.2 Channel and Tube lists

Once the TDMS data has been loaded, the channel list will display the TDMS channels and the tube list will display the corresponding tubes for each channel.

## 2.3 Loaded file


This indicator shows which TDMS file is currently loaded.

## 2.4 Graph display

The graph can display channels and tubes for analysis, using two independent scales.

<b>WKS Informatik GmbH</b> Ulmer Straße 8 88212 Ravensburg Tel: ++49 (0)751 / 366 60 – 60 www.wks-informatik.de	Ust-IdNr. DE 203907888 HRB 552079	<b>Geschäftsführer</b> Ronald Kaempf	<b>Bankverbindung</b> IBAN DE91 6505 0110 0048 0755 23 SWIFT-BIC: SOLADES1RVB Kreissparkasse Ravensburg
--	--------------------------------------	---	--

<b>Erstellung:</b> Datum: 20.11.2014 Andreea Solomon	<b>Prüfung:</b> Datum: 20.11.2014 Gisela Lämmle-Steinert	<b>Freigabe:</b> Datum: 20.11.2014 Gisela Lämmle-Steinert	Seite 6 von 11
--	--	---	----------------

	<b>Tube Analyzer LogViewer</b>	Dok Nr. QS-ID-042
	<b>User Guide</b>	Stand Dez 2014
		Revision 002

## 2.5 Various controls

Using the various controls in the middle of the GUI, the user can define cursors, corresponding plots, autoscale the curves, clear the curves, view the tube limits etc.

## 3 Functionality

Upon loading a TDMS file, the following popup will be shown. The user must input default values for the P\_Sample and P\_Log. The values displayed must not necessarily be changed, if the user is not sure which values he needs to input.

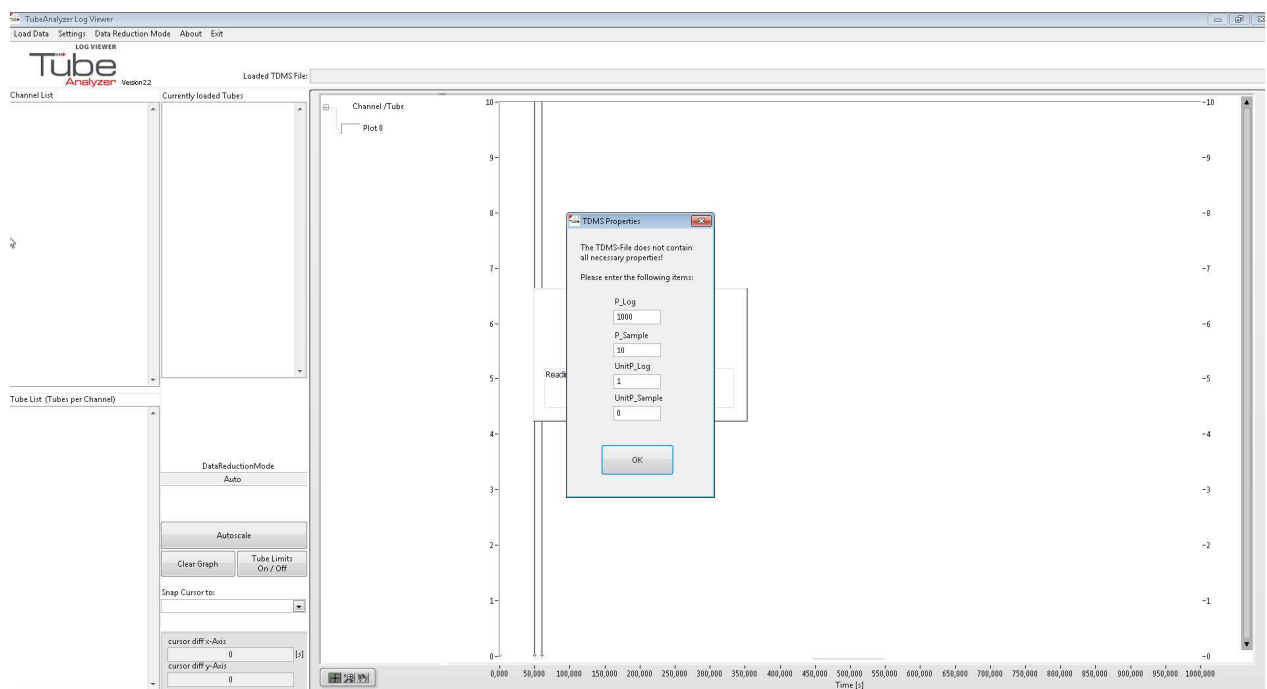


Fig.4 Tube Analyzer LogViewer – Default sample and log values

Once these values have been set, the TDMS' channels and tubes will be listed in the lists on the left side of the GUI.

The colours red and green describe the status of the tube: red is FAILED, green is PASSED. A channel with at least one red (FAILED) tube will be displayed also in red. A channel with only green (PASSED) tubes will be displayed in green. The graph displays ALL tubes of a channel in a single colour. Different channels have different colours.

<b>WKS Informatik GmbH</b> Ulmer Straße 8 88212 Ravensburg Tel: ++49 (0)751 / 366 60 – 60 www.wks-informatik.de	Ust-IdNr. DE 203907888 HRB 552079	<b>Geschäftsführer</b> Ronald Kaempf	<b>Bankverbindung</b> IBAN DE91 6505 0110 0048 0755 23 SWIFT-BIC: SOLADES1RVB Kreissparkasse Ravensburg
--	--------------------------------------	---	--

<b>Erstellung:</b> Datum: 20.11.2014 Andreea Solomon	<b>Prüfung:</b> Datum: 20.11.2014 Gisela Lämmle-Steinert	<b>Freigabe:</b> Datum: 20.11.2014 Gisela Lämmle-Steinert	Seite 7 von 11
--	--	---	----------------

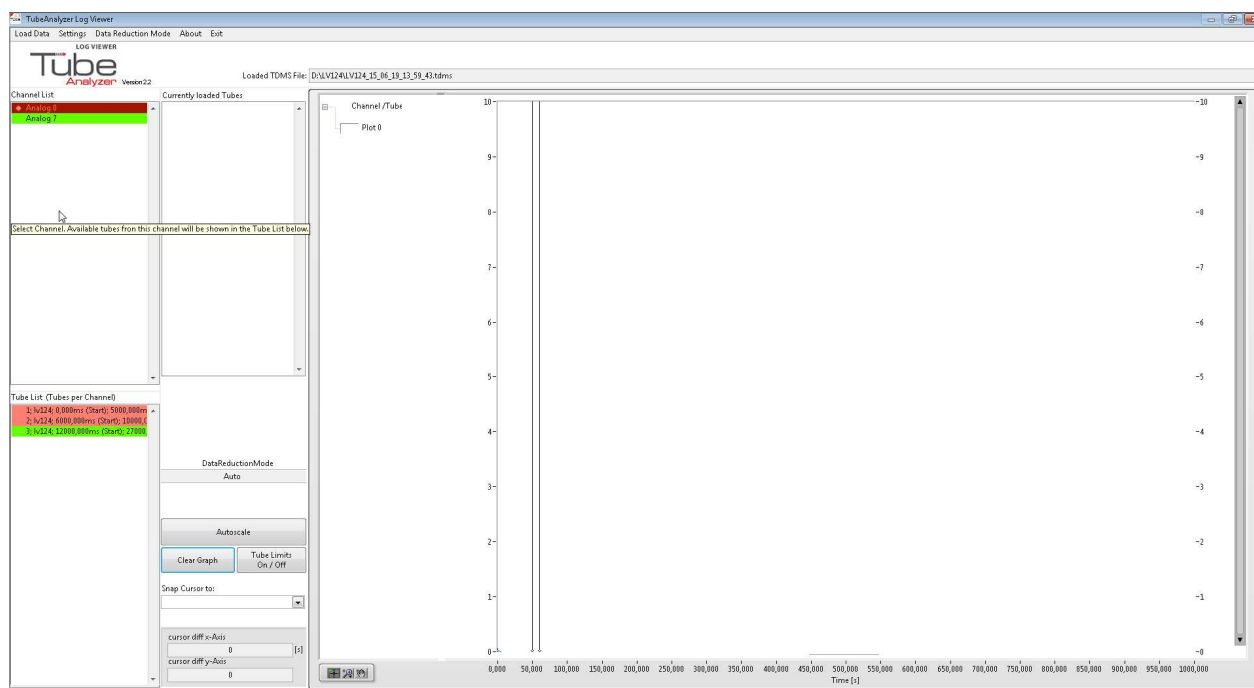


Fig.5 Tube Analyzer LogViewer – channel and tube lists

Using the mouse right-click, the user can load channels and tubes in the graph display. The user has to select the scale to which the selected curve will be attached: left or right.

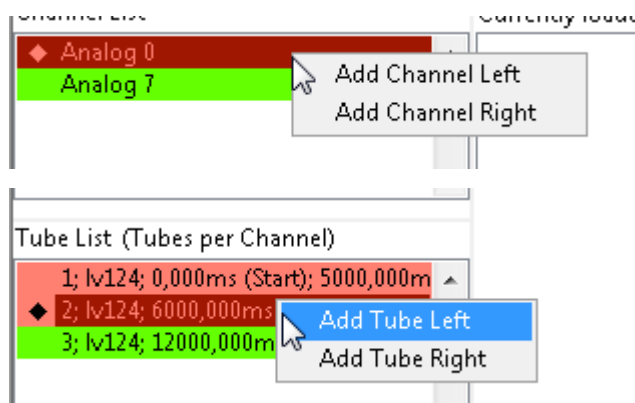


Fig.6 Tube Analyzer LogViewer – Scale choice option

<b>WKS Informatik GmbH</b> Ulmer Straße 8 88212 Ravensburg Tel: ++49 (0)751 / 366 60 – 60 www.wks-informatik.de	Ust-IdNr. DE 203907888 HRB 552079	<b>Geschäftsführer</b> Ronald Kaempf	<b>Bankverbindung</b> IBAN DE91 6505 0110 0048 0755 23 SWIFT-BIC: SOLADES1RVB Kreissparkasse Ravensburg
<b>Erstellung:</b> Datum: 20.11.2014 Andreea Solomon	<b>Prüfung:</b> Datum: 20.11.2014 Gisela Lämmle-Steinert	<b>Freigabe:</b> Datum: 20.11.2014 Gisela Lämmle-Steinert	Seite 8 von 11



The user can use the two predefined cursors to analyze the loaded tubes and can perform zoom and pan functions on the curves, by using the palettes beneath the graph.

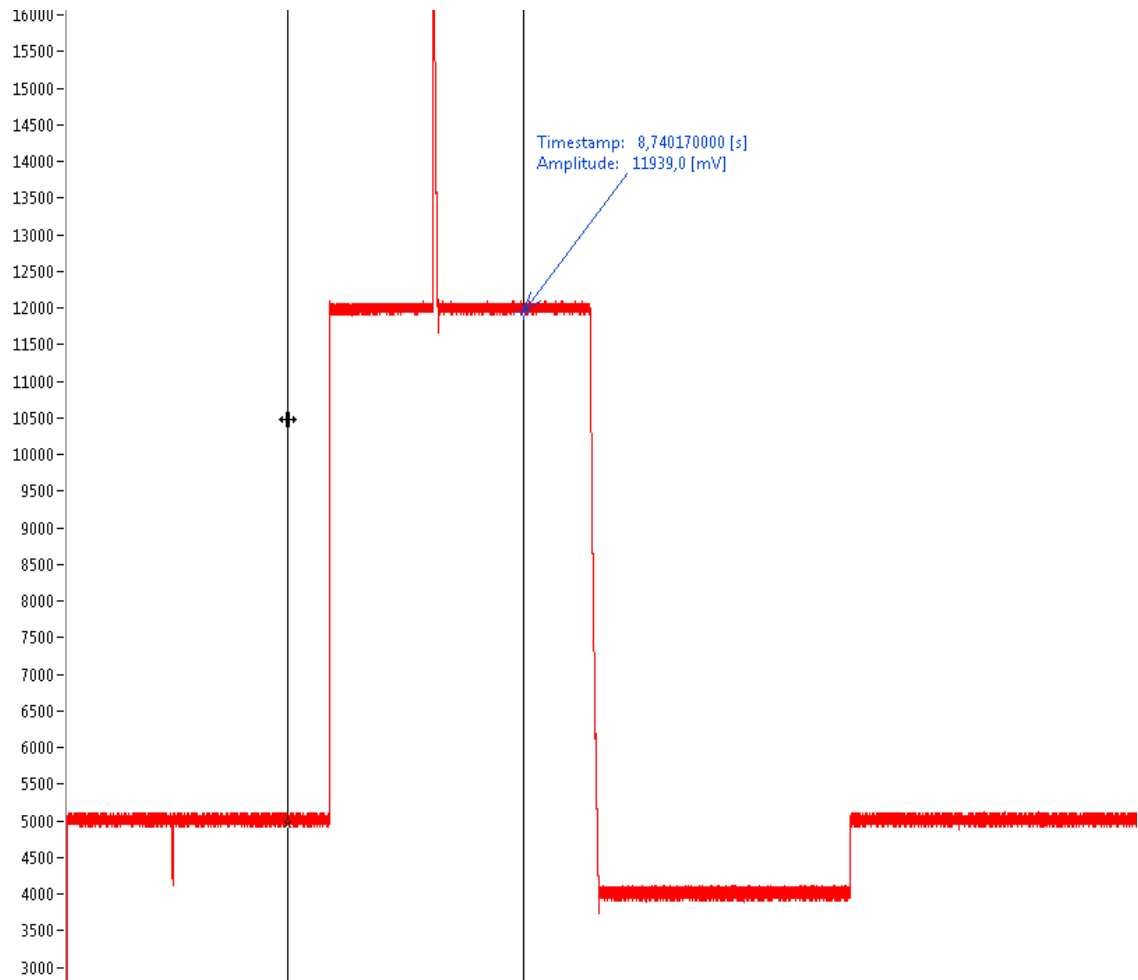


Fig.7 Tube Analyzer LogViewer – Cursors

The difference between the cursors' values are displayed in the controls in the middle of the screen. The user can as well snap the cursors to different curves, using the *Snap Cursor to* control. The *Autoscale* button rescales the curve to the full screen. The *Clear Graph* button deletes all curves from the graph. If the user has loaded tubes, he can enable or disable the display of the corresponding tube limits upon using the *Tube Limits On/Off* button. Also the current data reduction mode is displayed in the corresponding indicator.

<b>WKS Informatik GmbH</b>	Ust-IdNr. DE 203907888	<b>Geschäftsführer</b>	<b>Bankverbindung</b>
Ulmer Straße 8 88212 Ravensburg	HRB 552079	Ronald Kaempf	IBAN DE91 6505 0110 0048 0755 23
Tel: ++49 (0)751 / 366 60 – 60			SWIFT-BIC: SOLADES1RVB
www.wks-informatik.de			Kreissparkasse Ravensburg

<b>Erstellung:</b>	<b>Prüfung:</b>	<b>Freigabe:</b>	
Datum: 20.11.2014	Datum: 20.11.2014	Datum: 20.11.2014	
Andreea Solomon	Gisela Lämmle-Steinert	Gisela Lämmle-Steinert	Seite 9 von 11

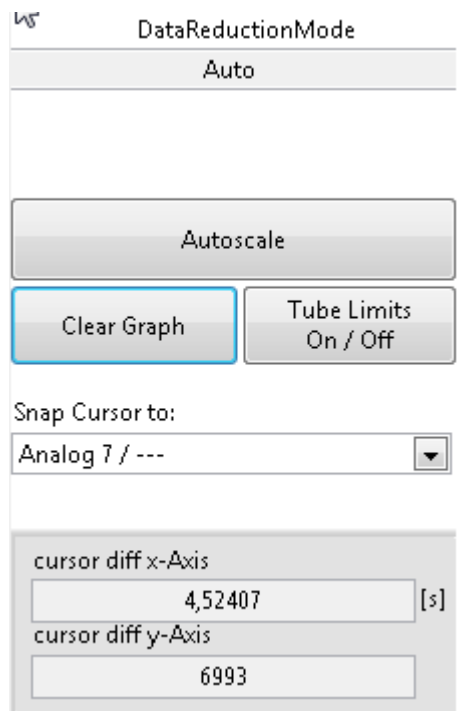


Fig.8 Tube Analyzer LogViewer – Various controls

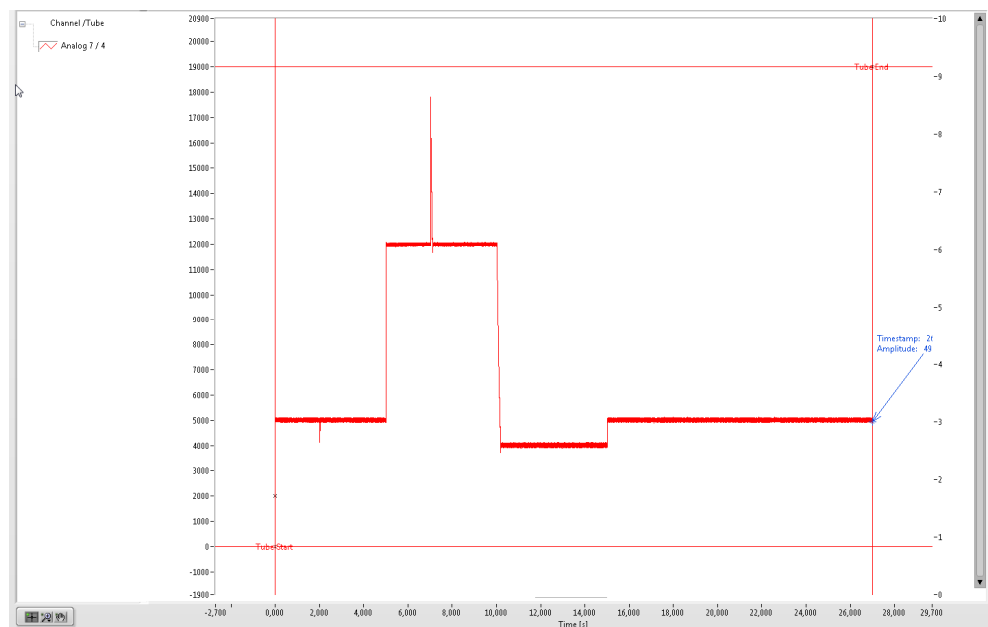



Fig.9 Tube Analyzer LogViewer – Tube limits

	<b>Tube Analyzer LogViewer</b>	Dok Nr. QS-ID-042
	<b>User Guide</b>	Stand Dez 2014
		Revision 002

The Log Viewer offers comfortable panning and zooming options for the graph, as well as the default ones. Clicking left mouse-button on the x- or y-axis and then moving the mouse activates panning up or down. Clicking right mouse-button on the x- or y-axis and then moving the mouse activates zooming in or out.

## 4 Updates

There are no current updates for the software.

## 5 Technical Support and Contact

For technical support or any other questions related to the Tube Analyzer, please contact WKS Informatik GmbH:

WKS Informatik GmbH

Ulmerstrasse 8

88212 Ravensburg

Germany

Tel: 0049 751 36 660 60

Fax: 0049 751 36660 66

<b>WKS Informatik GmbH</b>	Ust-IdNr. DE 203907888	<b>Geschäftsführer</b>	<b>Bankverbindung</b>
Ulmer Straße 8 88212 Ravensburg	HRB 552079	Ronald Kaempf	IBAN DE91 6505 0110 0048 0755 23
Tel: ++49 (0)751 / 366 60 – 60			SWIFT-BIC: SOLADES1RVB
www.wks-informatik.de			Kreissparkasse Ravensburg

<b>Erstellung:</b>	<b>Prüfung:</b>	<b>Freigabe:</b>	
Datum: 20.11.2014	Datum: 20.11.2014	Datum: 20.11.2014	
Andreea Solomon	Gisela Lämmle-Steinert	Gisela Lämmle-Steinert	Seite 11 von 11