

RTSTAND SIGNAL GENERATION

SIGNAL GENERATION DEVICE FOR LV 124 / LV 148

DEVELOPED TO SUPPORT THE REQUIREMENTS OF THE AUTOMOTIVE NORMS:

- LV 124, ISO 16750-2, VW 80000, BMW GS 95024-2-1, MBN LV 124-1 etc.
- LV 148, VDA 320, VW 82148, BMW GS 95026 etc.

The RTStand Signal Generation was specially developed in order to support the requirements of the automotive norms LV 124 and LV 148, by allowing signal generation of arbitrary curves, constant voltages, pwm pulses etc. In combination with a 4Q-Amplifier, it can generate the required bordnet simulation voltages. Moreover it can be used to remotely control the UFI switch device (for E10 & E13 tests) in order to support automation needs.

HIGHLIGHTS

- ✓ Support signal generation requirements for the automotive norms: LV124, LV 148 and their variants
- ✓ Can be used as a stand-alone device or can be integrated in automated testing systems
- ✓ 3 modi for maximum of flexibility in the definition and generation of signals
- ✓ 2 PWM outputs on an external voltage, e.g. Ubat, 5V etc.
- ✓ Remote control of the UFI switch device for E10 & E13 tests
- ✓ Trigger output for external devices, e.g. Tube Analyzer measurement device
- ✓ Remote control of 4Q-Amplifier for amplifying signal outputs
- ✓ Data acquisition on 2 voltage channels

USE CASES



Automotive Norm

The RTStand Signal Generation delivers a library of LV 124 / LV 148 curves, which can be expanded with additional customer-specific curves. The defined curves, together with additional settings for external devices can be saved to test configurations, which can be loaded and output.



Custom signal generation and measurement

The RTStand Signal Generation enables the generation of custom arbitrary curves and contains several functions allowing the generation of 2 PWM signals on a given external supply and the measurement of two voltage signals.

TECHNICAL DATA

Analog output

Number of channels	1
Voltage range	+/-10 V
Resolution	16 bit
Update rate	2.86 MS/s
Output impedance	0.2 Ohm
Output current drive	+/-5 mA

PWM output

Number of channels	2
Power supply	Ubat or constant voltage
Frequency	?

Counter output

Number of channels	4 (all in counter mode) or 2 + 2(in PWM mode)
--------------------	---

Trigger

Trigger input	For external triggering or bridging from trigger output
Trigger output	For triggering external devices

Analog input

Number of channels	2, differential
Analog input 0	Voltage range: +/-100 V, Impedance: 10 GOhm
Analog input 1	Voltage range: +/-10 V, Impedance: 10 GOhm
Sample rate	Up to 1MS/s (aggregate)
Accuracy	1.5 uV on +/-10 V range 15 uV on +/-100 V range



ARBITRARY CURVE LIBRARY

Arbitrary LV 124 Library

E01-E09, E11-E12, E15	included	for E10 & E13 the UFI switch device and the corresponding counter mode are necessary
-----------------------	----------	--

LV 148 Library

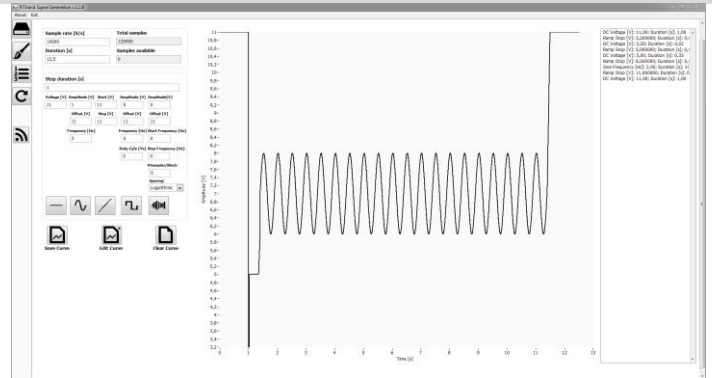
Available soon

CONTACT US

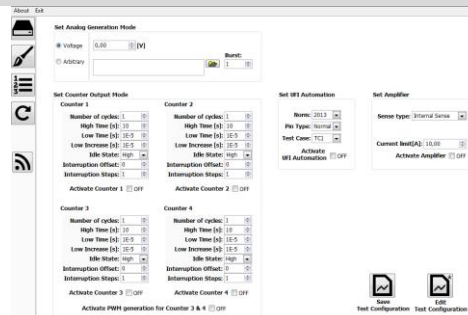
wks-informatik.de
+49 751 365 660 60
contact@wks-informatik.de

SOFTWARE**Paint mode**

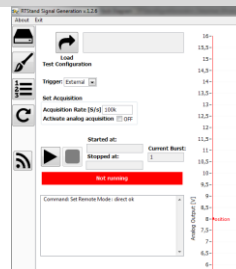
Enables the definition of arbitrary curves for the LV 124 and LV 148 automotive norms, as well as for any additional arbitrary curve. The defined curves are saved to *.warb files.

**Configuration mode**

Enables the configuration of channel properties, such as constant voltage or arbitrary curve as an analog output, or counter settings for interruption tests and pwm outputs. Together with UFI switch device configurations and amplifier settings, these properties are saved to *.ecfg files.

**Generation mode**

Enables the generation of signals according to the properties defined in the configuration mode – a corresponding *.ecfg file must be loaded. A parallel data acquisition on up to 2 channels is possible. The analog data for output is loaded in a graph display and the current output value is marked correspondingly.

**Remote mode**

For automation purposes, the device can be set into a remote mode – only the generation mode is active. Over a defined Shared Variables interface, the generation mode operations can be read and set by software.

GENERAL DATA

Dimensions	19" / 1HE / 450mm x 340mm x 43.7mm (length x width x height)
Weight	5 kg
Power supply	12V/3A external wall power supply
Temperature range	0 °C bis 45 °C
Humidity	25% to 75% noncondensing
Max. altitude	2000 m
FOR INDOOR USE ONLY!	