

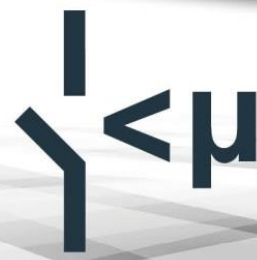
WKS Informatik GmbH

Ultra-fast Interrupter – Switching Device for 125A

Data sheet



LV124 READY



BUILT TO SWITCH



WKS
Informatik
Experts in Testing

Data sheet – UFI 125A

Application Area

Automotive

Tests covered

LV 124

VW 80000

ISO 16750-2

BMW GS95024-2-1

Renault 36.00.8.08

LV 148

VDA 320

...

LV 124 / LV 148

- <us interruptions
- Compliance with E10 and E13 tests

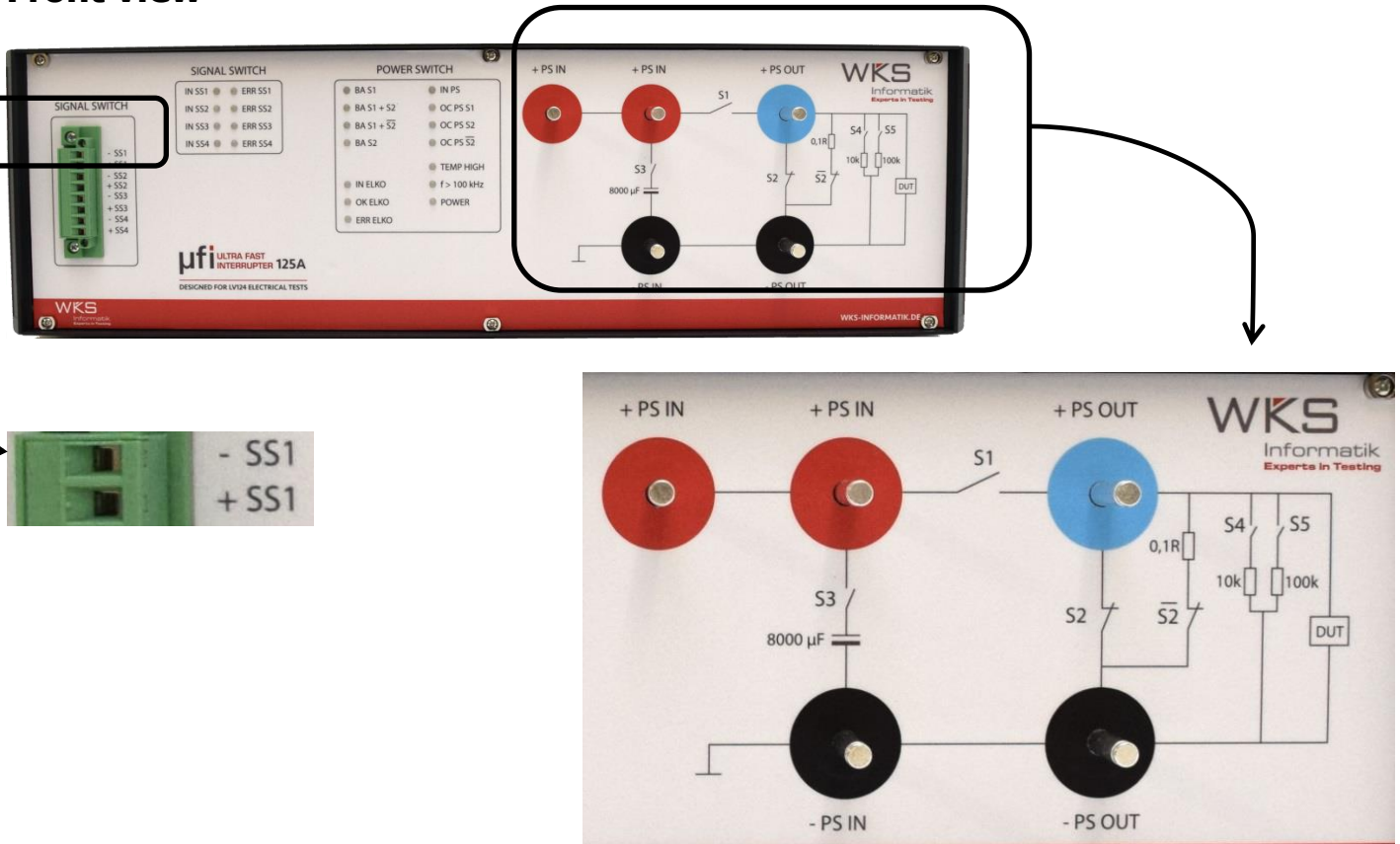
Uniques features

- Every switch follows the input signal up to <100kHz
- Every switch has its own input trigger
- Power switch modes can be remotely configured
- The input buffer capacitor can be remotely activated and deactivated
- Remotely settable between the 2009 and the 2013 LV 124 norms

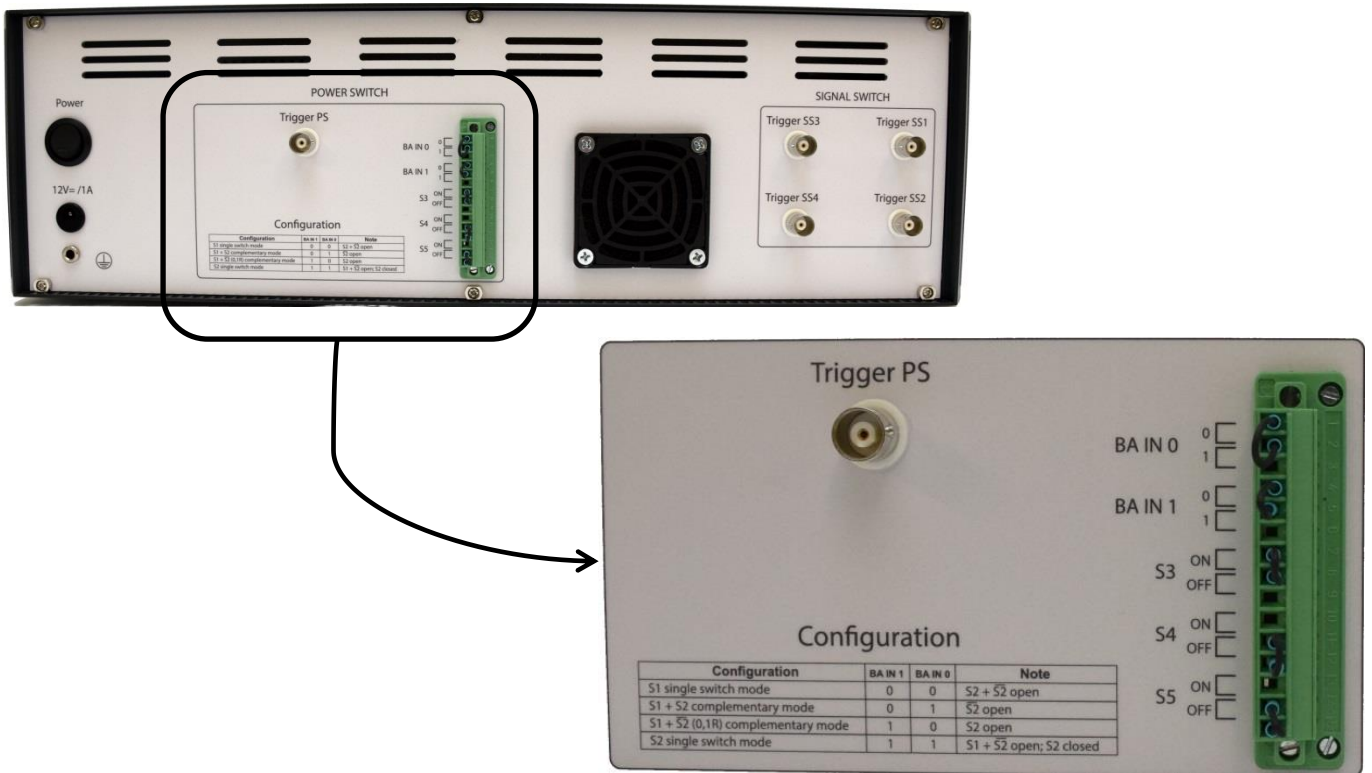
Data sheet – UFI 125A

Device images

Front view



Rear view



Data sheet – UFI 125A

Technical Details

Signal switch(es) - SS

Parameter	Description name	Value	Conditions
Electric strength	U_SS_Max	60V	Maximum voltage for the switch
Load current	I_SS	2A	Continuous, under adequate cooling of the switching module
Current limit	I_SS_max	3,5A to 5A	Current is actively limited
Overcurrent (OC)	I_SS_OC	>2,2A	If the current limit is tripped, the switch will be set off after a t_PS_OC time
Overcurrent time	t_SS_OC	>0,768ms	Until the Switch closes
Reset time OC	t_SS_Rück	>ca. 200ms	Reset time of a switch after tripping the overcurrent limit and simultaneous reset of the input signal (0%).
Overvoltage protection	SSx+ / SSx-	8/20µs 1,5A	Suppression diode / Norm pulse

Power switch - PS

Parameter	Description name	Value	Conditions
Electric strength	U_PS_Max	60V	Maximum voltage for the switch
Load current	I_PS	125A	Continuous, under adequate cooling of the switching module
Overvoltage protection	SSx+ / SSx-	10/1000µs 32A	Suppression diode / Norm pulse
Basic load	PSxOUT / PSx-	10k/100k	Configurable over the device back plane with bridges oder automated with relays.
Support capacitor	C_IN	8000uF/100V	Shiftable over bridges (shifting only allowed in off mode)
Insulation voltage	ISO	100V	PS1 for control side and SS1..SS4.

Data sheet – UFI 125A

Technical Details

Overcurrent limits for S1 and S2

No active current limitation through the power switch!

I_PS_OC	t_PS_OC	t_PS_Rück
normal ≤125A	-	-
>125A-175A	520ms	2050ms
>175A-280A	10ms	680ms
>280A	2μs	140ms

Overcurrent limits for $\overline{S2}$

No active current limitation through the power switch!

I_PS_OC	t_PS_OC	t_PS_Rück
normal ≤125A	-	-
>125A-175A	520ms	2050ms
>175A-280A	10ms	680ms
>280A	2μs	140ms

Data sheet – UFI 125A

General Data

Dimensions	19" / 3HU 450mm x 360mm x 145mm (length x width x height)
Weight	5 kg
Supply voltage	12 V 1 A
Operational temperature	0 °C - 40 °C
Humidity	10 % RH – 90 % RH, noncondensing
Storage temperature	-20 °C – 70 °C
Maximum altitude	2000 m
Pollution degree	2

For indoor use only.

Hardware Premise

Cable harness	Twisted, max. length 0,5 m
----------------------	----------------------------

Software Options

RTStand Library www.rtstand.com | www.lv124-rtstand.com

The RTStand library offer an entry-point in the automated control of the UFI in connection with a fully-automated LV 124 testing system. (NI LabVIEW / NI TestStand technology)

Data sheet – UFI 125A

Contact & Technical Support

WKS Informatik GmbH
Ulmer Strasse 8 | 88212 Ravensburg | Germany
Tel. +49 751 36 660 60
Fax. +49 751 36 660 66
Email. contact@wks-informatik.de
Web. www.wks-informatik.de

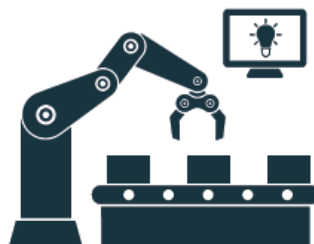
EXPERTS IN TESTING

Based on over 20 years of being National Instruments Alliance Partner (Silver) and relying on a double LabVIEW/TestStand Architect certification, we at WKS Informatik focus on customer success, providing innovative and cost-efficient solutions for industries such as Automotive, Aerospace and RF/Communications, complying with the most challenging software and hardware requirements.

LV 124 / LV 148 AUTOMOTIVE TESTING



INDUSTRIAL AUTOMATION



RF / RADAR AUTOMOTIVE TESTING

