

WKS Informatik GmbH

Tube Analyzer – Measurement and analysis for LV 124

Data sheet



LV124 READY



FLEXIBLE USE



BUILT TO DETECT



WKS
Informatik
Experts in Testing

Data sheet – Tube Analyzer

Application Area

Automotive

Industrial automation

Signal analysis

Tests covered

LV 124

VW 80000

ISO 16750-2

BMW GS95024-2-1

Renault 36.00.8.08

LV 148

VDA 320

...

LV 124 / LV 148

- Event detection with 100kHz
- Monitoring before, during and after event
- Import of LV124 onboard supply curves

Uniques features

- Stand-alone component
- Integrable in any automated test system
- Complete tool chain with Viewer and Generator
- Cascaded use of several devices possible
- Detects short sporadic errors
- Continuously monitors all pins
- Support of analog/PWM channels
- TDMS Logging

Data sheet – Tube Analyzer

Device images

Front view with default connection technology



F96 – 96 pin layout



F24 – 24 pin layout



F8 – 8 pin layout

The connection technology can vary upon explicit customer request!

Data sheet – Tube Analyzer

Technical Details

	TubeAnalyzer f8	TubeAnalyzer f24	TubeAnalyzer f96
Number of AI - channels	7 (+1)	20	Configurable up to 96
Number of pwm - channels	0	4	Configurable up to 80

Measurement properties			
frequency: 1,5 Hz - 100 KHz period: 0,01 ms - 655,35 ms duty cycle: 0..100% amplitude: -/+60 V			
Max. sample rate per channel	100 KHz		
Min. sample rate per channel	1 Hz		
Max. sample rate on all channels parallel	100 KHz		
Flexible sample rate on all channels in case of "passed" tube (s. page 3)	●		
Flexible sample rate on all channels in case of "failed" tube (s. page 3)	●		
Logging in TDMS file format for all channels parallel	●		
Pretrigger	●		
Posttrigger	●		
Remote control over Shared Variables	●		
External clock	-	●	●
External trigger	analog (channel 8)	digital	digital

Tube Analyzer package includes	
Tube Analyzer Testrun Generator	●
Tube Analyzer	●
Tube Analyzer / RTStand Log Viewer	●
Include 1 Year SSP (Standard Service Program)	●

System requirements			
RAM [GB]	8	16	min 16
Operating system	WIN 7/64 bit	WIN 7/64 bit	WIN 7/64 bit
Harddisk min. 250 GB	SSD	SSD	SSD
Connection	USB	LAN	PCIe

legend: - not supported, ● supported

Device specification

Measurement accuracy / Noise – calibrated / 25°C	+/- 126mV for 12V
Voltage range	+/- 60V
Input bandwidth (-3 dB)	950 kHz min

Data sheet – Tube Analyzer

Supported Sample/Log rates combinations

P_Sample	P_Log	25KHz	20KHz	10KHz	5KHz	2KHz	1KHz	500Hz	250Hz	200Hz	100Hz	50Hz	25Hz	20Hz	10Hz	5Hz	2Hz	1Hz
100 KHz	50KHz																	
50KHz	25KHz																	
25KHz	5KHz																	
20KHz	10KHz																	
10KHz	5KHz																	
5KHz	1KHz																	
2KHz	1KHz																	
1KHz	500Hz																	
500Hz	250Hz																	
250Hz	50Hz																	
200Hz	100Hz																	
100Hz	50Hz																	
50Hz	25Hz																	
25Hz	5Hz																	
20Hz	10Hz																	
10Hz	5Hz																	
5Hz	1Hz																	
2Hz	1Hz																	
1Hz	1Hz																	

Data sheet – Tube Analyzer

General Data

	F8	F24	F96
Dimensions	220mm x 170mm x 60mm (length x width x height)	485mm x 330mm x 135mm (length x width x height)	485mm x 330mm x 135mm (length x width x height)
Weight	1,5 kg	5 kg	8,5 kg
Supply voltage	Over USB	24 V 1 A	24 V 1 A
Operational temperature	-40 °C - 70 °C		
Humidity	10 % RH – 90 % RH, noncondensing		
Storage temperature	-40 °C – 85 °C		
Maximum altitude	2000 m		
Pollution degree	2		

For indoor use only.

Hardware Options

Software Options

Tube Analyzer Package

<http://www.tube-analyzer.com> | www.lv124-rtstand.com

The Tube Analyzer device comes with a software package including the measurement and analysis software, the TestRun Generator for setting up the measurement configuration and the RTStand / Tube Analyzer Log Viewer for visualization of the logged data. (NI LabVIEW technology)

Data sheet – Tube Analyzer

Contact & Technical Support

WKS Informatik GmbH
Ulmer Strasse 8 | 88212 Ravensburg | Germany
Tel. +49 751 36 660 60
Fax. +49 751 36 660 66
Email. contact@wks-informatik.de
Web. www.wks-informatik.de

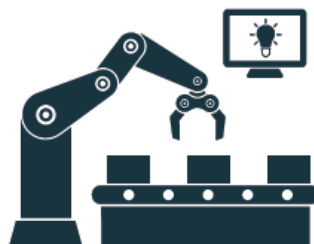
EXPERTS IN TESTING

Based on over 20 years of being National Instruments Alliance Partner (Silver) and relying on a double LabVIEW/TestStand Architect certification, we at WKS Informatik focus on customer success, providing innovative and cost-efficient solutions for industries such as Automotive, Aerospace and RF/Communications, complying with the most challenging software and hardware requirements.

LV 124 / LV 148 AUTOMOTIVE TESTING



INDUSTRIAL AUTOMATION



RF / RADAR AUTOMOTIVE TESTING

